

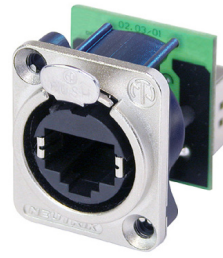
NE8FDP

RJ45 feedthrough receptacle, D-shape metal flange with the latch lock, mounting screws included

The etherCON Series is a ruggedized and lockable RJ45 connector system, optimized for pro audio, video and lightning network applications. The chassis connectors are shaped to fit into standardized panels out of the entertainment industry.

The D-Series offers the most rugged design of the etherCON series and is perfectly suitable for panel mount and the installer market.

Attention! Does not intermate with CAT6 cable connector NE8MC6-MO and NKE6S* cables.



Features & Benefits

- Accommodates NE8MC* or any standard RJ45 plug
- Approved latch lock system
- Mountable from the front or rear of the panel
- Complies with Cat 5e according to TIA / EIA 568B and ISO / IEC 11801 standard

Technical Information [hide](#)

Product	
Title	NE8FDP
Gender	female
Electrical	
Contact resistance	< 10 mΩ
Dielectric strength	1 kVdc
Frequencyrange	1 - 100 MHz
Insulation resistance	> 0.5 GΩ
Rated current per contact	1,5 A
Rated voltage	< 50 V
Transmission performance	CAT 5e
Standard compliance	TIA/EIA 568B, IEC11801
Mechanical	
Insertion force	≤ 20 N
Withdrawal force	≤ 20 N
Lifetime	> 1000 mating cycles
Panel thickness	max. 4 mm 0.16"
Wiring	Feedthrough
Locking device	Latch lock
Chassis shape	D

Contact plating	0.2 µm Au over Ni plating
Contacts	Bronze (CuSn8)
Insert	PBTP 15 % GR
Shell	Zinc diecast (ZnAl4Cu1)
Shell plating	Nickel
Environmental	
Flammability	UL 94 V-0
Temperature range	-30 °C to +80 °C

Accessories

DSS-*



E-SCREW1-12 B



E-SCREW1-12NI



SCDP-*



SCDX



SE8FD



SCCD-W

