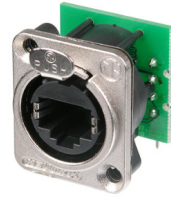


# NE8FDH-C5e

Horizontal C5e component compliant PCB panel mount RJ45 receptacle, D-shape metal flange with latch lock, max. panel thickness 4 mm, mounting screws not included

The etherCON Series is a ruggedized and lockable RJ45 connector system, optimized for pro audio, video and lightning network applications. The chassis connectors are shaped to fit into standardized panels out of the entertainment industry.

The D-Series offers the most rugged design of the etherCON series and is perfectly suitable for panel mount and the installer market.



Attention! Does not intermate with CAT6 cable connector NE8MC6-MO and NKE6S\* cables.

## Features & Benefits

- Accommodates NE8MC\* or any standard RJ45 plug
- Complies with CAT5e according to TIA / EIA 568B and ISO / IEC 11801 standard
- Approved latch lock system
- Mountable from the front or rear of the panel
- Ground-panel connection

## Technical Information [hide](#)

Product	
Title	NE8FDH-C5e
Gender	female
Electrical	
Contact resistance	< 10 mΩ
Dielectric strength	1 kVdc
Frequencyrange	1 - 100 MHz
Insulation resistance	> 0.5 GΩ
Rated current per contact	1.5 A
Rated voltage	< 50 V
Transmission performance	CAT 5e
Standard compliance	TIA/EIA 568B, IEC11801
Mechanical	
Insertion force	≤ 20 N
Withdrawal force	≤ 20 N
Lifetime	> 1000 mating cycles
Panel thickness	max. 4 mm 0.16"
Wiring	Horizontal PCB mount
Locking device	Latch lock

**Material**

Contact plating	0.2 µm Au over Ni plating
Contacts	Bronze (CuSn8)
Insert	PBTP 15 % GR
Shell	Zinc diecast (ZnAl4Cu1)
Shell plating	Nickel

**Environmental**

Flammability	UL 94 V-0
Solderability	Complies with IEC 68-2-20
Temperature range	-30 °C to +80 °C

**Accessories**

DSS-\*



E-SCREW1-12 B



E-SCREW1-12NI



SCDP-\*



SCDX



SE8FD



SCCD-W

