

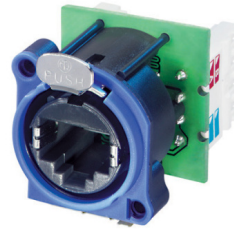
NE8FAV-Y110

Panel mount RJ45 receptacle, IDC 110 punch down terminals, A-Series cutout with latch lock system, max. panel thickness 3 mm. Mounting screws included.

The etherCON Series is a ruggedized and lockable RJ45 connector system, optimized for pro audio, video and lightning network applications. The chassis connectors are shaped to fit into standardized panels out of the entertainment industry.

The all plastic A-Series offers the most space saving and cost effective design.

Attention! Does not intermate with CAT6 cable connector NE8MC6-MO and NKE6S* cables.



Features & Benefits

- Accommodates rugged etherCON NE8MC* or any standard RJ45 plug
- Approved latch lock system
- Most space saving and cost effective design
- Complies with Cat 5e according to TIA / EIA 568B and ISO / IEC 11801 standard
- Selectable ground - panel connection
- Easy and quick mounting using 110 type punch down terminals

Technical Information [hide](#)

Product	
Title	NE8FAV-Y110
Gender	female
Electrical	
Contact resistance	< 10 mΩ
Dielectric strength	1 kVdc
Frequencyrange	1 - 100 MHz
Insulation resistance	> 0.5 GΩ
Rated current per contact	1,5 A
Rated voltage	< 50 V
Transmission performance	CAT 5e
Standard compliance	TIA/EIA 568B, IEC11801
Mechanical	
Insertion force	≤ 20 N
Withdrawal force	≤ 20 N
Lifetime	> 1000 mating cycles
Panel thickness	max. 3 mm 0.12"
Wiresize	0.14 - 0.5 mm ²
Wiresize	26 - 20 AWG
Wiring	IDC 110 punch down terminals
Home Products About us Contact Support	

Locking device	Latch lock
Mounting direction	Rear mounting
Chassis shape	A
Material	
Contact plating	0.2 µm Au over Ni plating
Contacts	Bronze (CuSn8)
Insert	PBTP 15 % GR
Shell	PBTP 15 % GR
Strain relief	CuZn35Pb2, Tin plated
Environmental	
Flammability	UL 94 V-0
Temperature range	-30 °C to +80 °C

Accessories

A-SCREW-1-8



ACRF-*

